

# IT JUST NEEDS TO STOP THE USUAL ELEMENTS. WIND, WATER, DIRT AND FIRE.

## POLARTEC® WIND PRO®

### HOW DOES IT WORK?

Proprietary yarns and a very tight construction greatly reduce the effects of wind chill, the Achilles heel of traditional fleece. We have proven its effectiveness both in the lab and in the field. Polartec® Wind Pro® FR is 4 times more wind resistant than traditional fleece and the flame resistant fiber provides extreme flame protection. Velour or pebbled back efficiently traps air and provides a high warmth-to-weight ratio.

Because it is not a laminate, Polartec® Wind Pro® FR is also highly breathable, maintaining 85% of the breathability of traditional fleece to keep you from over heating.

### CERTIFICATIONS:

Fabrics are tested in the Polartec® state of the art labs and are certified to pass one or more of the following standards:

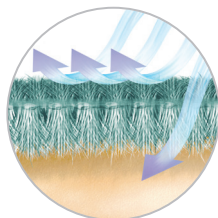
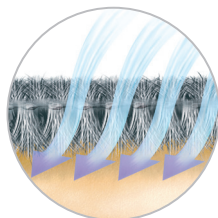
- ASTM D 6413
- ISO 14116
- ISO 11612
- NFPA 1975
- NFPA 2112
- NFPA 70E (ASTM 1506)
- These results have been confirmed by independent testing firms.

#### Polartec® Wind Pro® is 4x more wind resistant than traditional fleece

Traditional fleece allows 250 CFM (1000 l/m²/s) through fabric wall

**4:1**

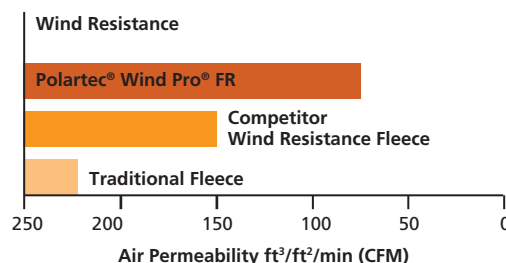
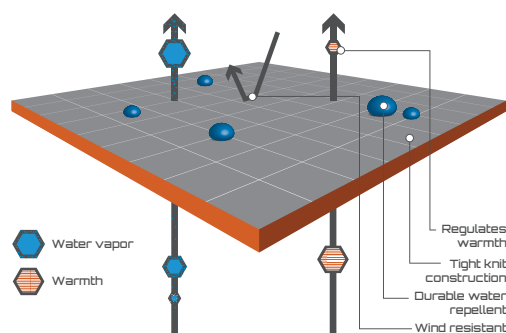
Polartec® Wind Pro® allows 60 CFM (240 l/m²/s) through fabric wall



Lower values mean greater capability to block wind. Values are ft³/ft²/minute (l/m²/second) and represent an average value for the series.

### PROTECTIVE WARMTH

- Permanently flame resistant
- Wind resistant
- Warmth without weight
- Water repellent
- Highly breathable
- Easy care



WIND PRO® FR

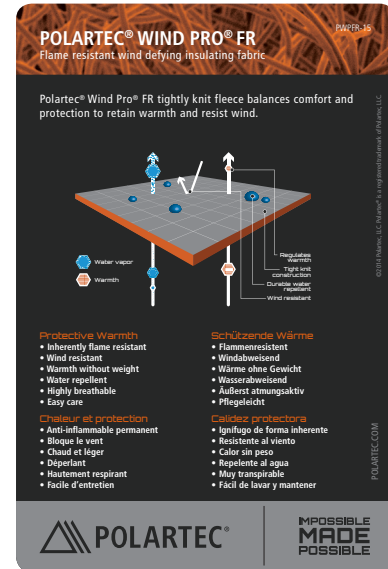
## TECHNICAL HIGHLIGHTS

- Made with a unique blend of fibers for permanent flame resistance
- Will not melt or drip
- 4 times more wind resistant than traditional fleece
- Warmth without the weight
- Water repellent surface sheds rain and snow
- Very breathable for active use
- Durable
- Machine washable

## POLARTEC® WIND PRO®

Polartec® Wind Pro® FR fabric is the reference standard for flame resistance, and is 4-times more wind resistant than traditional fleece. The fabric is permanently flame resistant and will not melt or drip on the skin when exposed to heat or flame. Additionally, the fabric provides warmth, outstanding breathability, lightweight comfort and water repellency.

## HANG TAGS



## ICONS



## LABELS



PLFRS-10

WIND PRO® FR